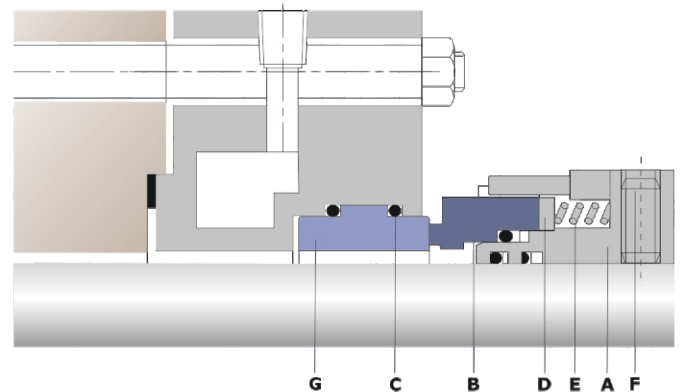
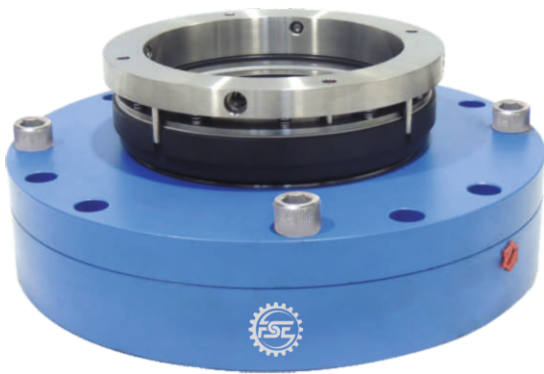




## PRODUCT DETAILS

### DRY- RUNNING MIXER MECHANICAL SEAL



#### TYPE FS-100

Type FS-100 seals are factory assembled & dynamically tested units for glass lined, SS mixers, Agitator & vessels. It is multi spring balanced outside mounted seal, This seal are basically used on top entry agitator as dry running, The advantage of this seal is that it does not required any lubricant or any quenching system, It performs best in pharmaceutical applications, corrosive services and food products.

#### Seal Characteristics

- Single Seal
- Balanced
- Independent of direction of rotation

#### Operating Parameters

- Shaft Sizes d1 : 18...200mm
- Pressure p : 10 bar (max)
- Temperature t : -20...+150 °C
- Speed v : up to 1.5 m/s

#### Part No. Description

A	Retainer
B	Seal Face
C	O-Ring
D	Thrust Ring
E	Spring
F	Grub Screw
G	Stationary Seat

#### Materials

- Seal Faces : Carbon / SiC / Tung. Carbide
- Metal Parts : SS316 / Hastelloy-C / Carpenter 20
- Secondary Sealing : FKM / PTFE / EPDM / Karlez

#### Applications

- General Chemicals
- Food & Pharma
- Petrochemicals